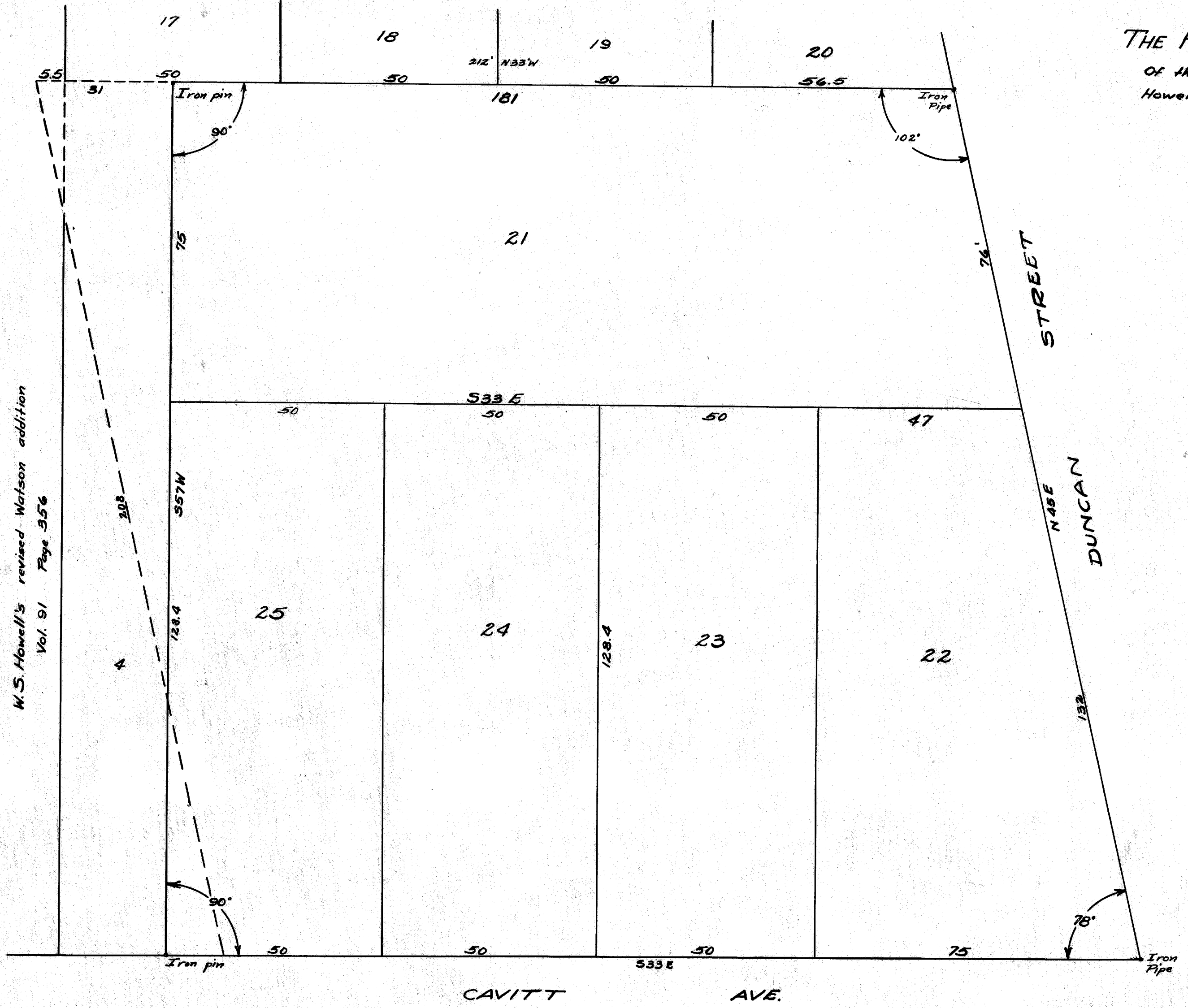
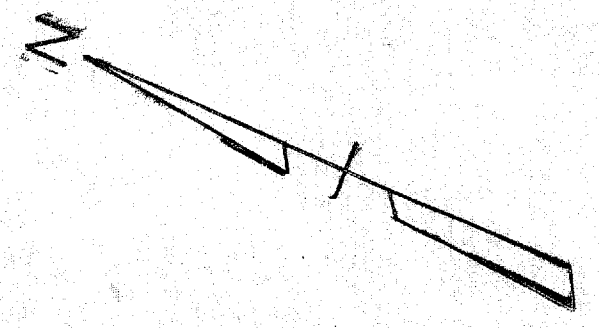


W. S. Howell's Revised Watson's Addition
Vol. 91 page 356

THE FULLER-HOLLIGAN SUBDIVISION
Of the one acre tract in the south corner of W.S.
Howell's Revised Watson's Addition to the City
of Bryan, Texas

SCALE: 1" = 20'

D/R. 143 Page 5
March 9, 1950



W.S. Howell's revised Watson addition
Vol. 91 Page 356

on base of plat